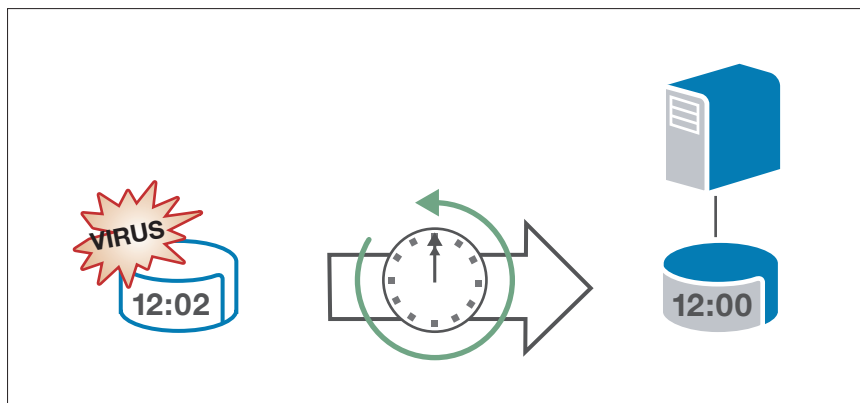


STORAGE CENTER™ DATA INSTANT REPLAY™

Meeting Today's Recovery Requirements

Many companies are using snapshot technology to improve recoverability over daily tape backups, but traditional offerings have numerous limitations and are difficult to manage. Typical snapshot solutions consume excess storage space, limit the number of snapshots, require highly skilled administrators to implement and have a negative impact on performance.



Instant Recovery: Data Instant Replay enables you to instantaneously roll back time to a previously known state for fast, accurate recovery.

Compellent Provides Quick and Easy Recovery

Data Instant Replay uses Compellent's patented technology to allow you to recover any size volume to any server in less than 10 seconds, without any of the traditional snapshot restraints. Using a simple point-and-click interface, administrators of all levels can immediately recover in the event of data disruption.

Instant Recovery Without Limits. Create and store unlimited Replays (snapshots) at any time interval with minimal storage capacity and no performance degradation.

Easy To Deploy and Manage. Save administrative time through an intuitive point-and-click user interface and wizard-based setup and recovery.

Continuous Data Protection. Minimize system downtime with instantaneous recovery. An unlimited number of Replays protects you from data hazards and disruptions, including viruses, power outages, hardware failures and human errors.

The Only Snapshot Software That Delivers Instant Recovery From Any Point In Time

KEY BENEFITS

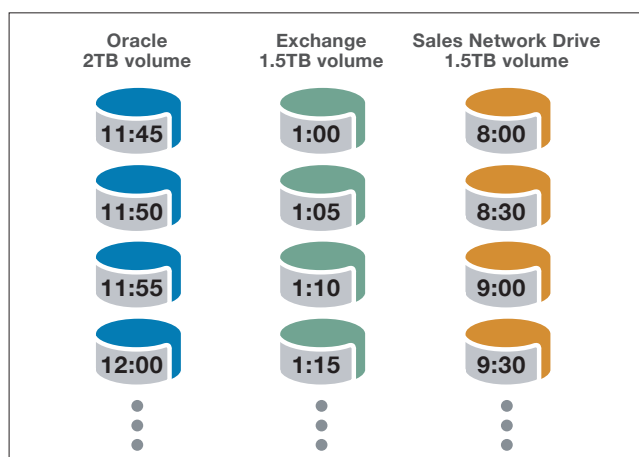
- » Recover in less than 10 seconds
- » Create an unlimited number of Replays without performance degradation
- » Eliminate tape for daily backups
- » Minimize system downtime from disk or server failures, viruses or human error
- » Easily set up Replay schedules with intuitive point and click interface
- » Test new software and patches on actual data before releasing to production, cutting time and risk
- » Reduce the cost of servers by increasing the efficiency of booting from the SAN

Traditional snapshot technologies only allow the creation of 10 less per volume and require full volume clones, consuming available capacity and impacting performance.

PRODUCT FEATURES

Space-efficient Snapshots Save Disk Space

Compellent's patented technology allows the creation of unlimited Replays that consume minimal storage space. Replays are created without an initial clone and contain only written data, rather than the allocated but unused storage typical in other systems. This space-efficient design enables you to create and store Replays without consuming excess storage capacity or negatively impacting performance. Although Replays only consume a small amount of storage space, every Replay is a readable and writeable volume that can be instantly mapped to any server.

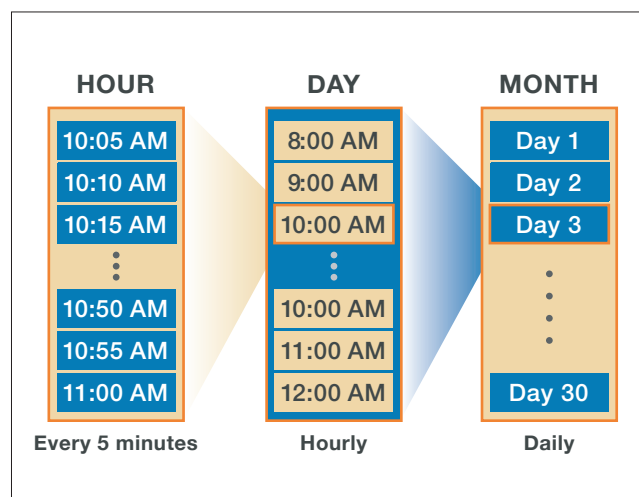


- » Full recovery without volume clones or pre-allocation of space
- » Instantly recover any volume to any server
- » Replays occur without any performance impact on the source volume
- » Replays automatically expire after a user-specified time and space is automatically returned to the shared storage pool

Unlimited Replay Frequency: *Create Replays at any time interval, at the frequency required for your business without traditional scaling limitations.*

Unlimited Frequency Improves Recoverability

With Data Instant Replay, you can create an unlimited number of Replays at any time interval and keep those Replays for unlimited time periods. This allows you to establish the number of recovery points your business requires and reduce dependence on tape backups.



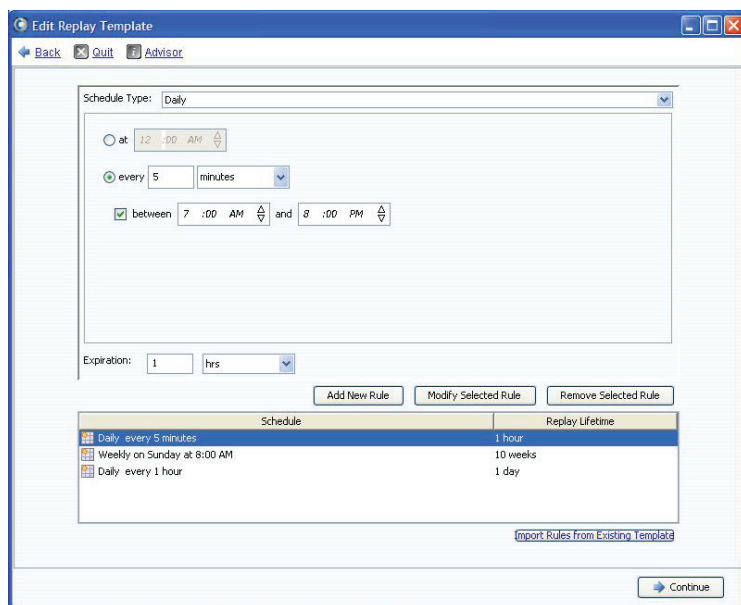
- » Creating more recovery points minimizes potential data loss so recovery can be targeted as closely as possible to when the failure occurred
- » Unlimited quantity of Replays; number of volumes; size of volume; Replays per LUN; number of branches using writeable Replays; duration and expiration of Replays
- » Branched Replays can be created to allow multiple teams to test recovery strategies
- » Overlapping Replay schedules allow the coverage of one Replay instance to be substituted for another

Continuous Data Protection: *Created nested Replay schedules with any number of snapshots per volume at time intervals that deliver continuous protection of your data.*

Intuitive Interface Enables Fully Automated Replays

Administrators of all levels can easily automate Replays through a point-and-click interface. Replay schedules are created with easy to implement user defined rules – no scripting is required. Once a rule is created, it can be applied to multiple volumes. And rules can be added at any time, even after the volume is in use. All of this means you can easily implement continuous data protection and spend less time managing backups.

- » Wizard-based setup and recovery via an Outlook-type interface
- » Phonehome status notification, remote and local web based monitoring
- » Easy to implement policy based schedules
- » Import data from existing templates to easily apply standard Replay rules



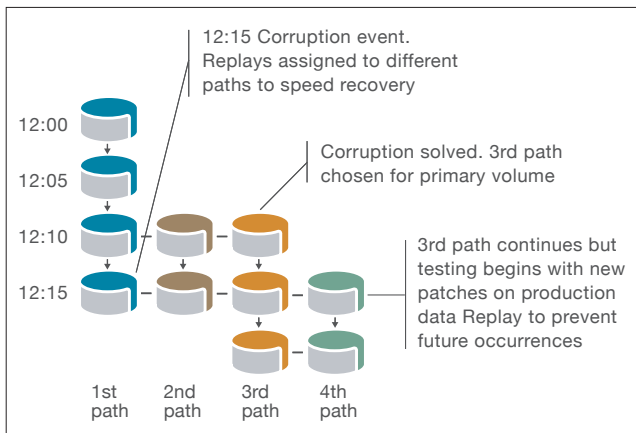
Automated Replay Schedules: *Create, track and organize your entire Replay schedule from a single screen with a simple point-and-click interface that allows you to set the frequency and expiration date by volume.*

Fast Recovery Compatible With Every Application

Data Instant Replay works across all operating systems without the expense of server software or server agents. Data Instant Replay integrates with all applications and provides quick, consistent application recovery. Multiple new volumes can be created from a single Replay to allow multiple teams to work in parallel using the same data – shortening the time it takes to find a problem plaguing a server.

- » Recover any volume to any server in less than 10 seconds
- » Increase level of service to your end users by recovering deleted files quickly
- » Minimize system downtime from disk or server failures

Data Instant Replay allows you to recover any size volume to any server in less than 10 seconds.

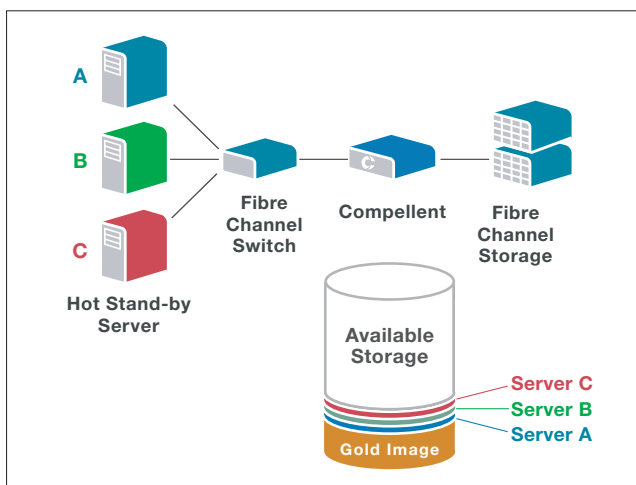


- » Deploy new OS patches without risk
- » Integration with Microsoft's VSS (Volume Shadow Services) ensures consistent application recovery

Risk-free Software Testing: *Branched Replays allow multiple teams to test new software and patches on actual data before installing.*

Reduce Server Costs With Boot From SAN

Storage Center optimizes the boot process through the creation of a golden copy of the boot image on the SAN rather than on the internal disk drives within every server – saving money, increasing performance and conserving capacity. Using Data Instant Replay, boot images for every additional server can be made from the original boot image by copying only the minor differences between servers. In this fashion, boot images can be placed on the SAN for literally dozens of servers and consume only slightly more storage than the space typically required by one server.



- » Deploy diskless servers – significantly reduce server hardware costs
- » Lower server maintenance cost by deploying hot spare servers
- » Create boot volumes for large server farms consuming minimal disk space
- » No limitations on how many servers can access base volume
- » Works with any operating system on any server

Centralize Boot Images: *Eliminate the boot drives and server agents from each server by only storing the minor differences between servers using Data Instant Replay.*

The Only Snapshot Software That Delivers Instant Recovery From Any Point In Time

With Data Instant Replay your business is fully protected from a wide range of data hazards and disruptions including viruses, power outages, hardware failure and human errors. A simple point-and-click interface allows quick and easy restoration of data by administrators of all levels. By creating an unlimited number of space-efficient point in time copies, Data Instant Replay delivers instant recovery from any point in time without traditional storage system restraints.

DATA INSTANT REPLAY SPECIFICATIONS

ARCHITECTURE

| | |
|--|---------------------------|
| Automated Replay Creation and Scheduling | Yes |
| Pre-allocation Required | No |
| Readable and Writeable Replays | Yes |
| Copy-on-write Technology | No, Pointers to Data only |
| Volume Recovery using Written Data Only | Yes |
| Volume Clone Required for Recovery | No |
| Automated Coalescence of Expired Replays | Yes |
| Additional Software Required for Replays | No |

SCALING

| | |
|--------------------------------------|-----------|
| Maximum Number of Replays per Volume | Unlimited |
| Maximum Number of Volumes | Unlimited |
| Maximum Number of Replay Branches | Unlimited |
| Maximum Expiration of Replays | Unlimited |

PERFORMANCE

| | |
|----------------------------------|---------------------|
| Time Required to create a Replay | Less than 5 seconds |
| Time Required to mount a Replay | Less than 5 seconds |

MANAGEMENT

| | |
|---------------------------------------|---|
| Wizard-based Replay Templates | Yes |
| Replay Scheduling Frequency | Once, Minutes, Hours, Days, Weeks, Months |
| Multiple Replay Schedules for Volumes | Yes |
| Outlook-style Scheduling | Yes |

SERVER ENVIRONMENT

| | |
|--|---|
| Server Agent Required | No |
| Volume Recovery to any Server | Yes |
| Integration with Microsoft's VSS (Volume Shadow Copy Services) | Yes |
| Server Operating System Support | Microsoft Windows, Sun Solaris, HP-UX, Linux, IBM AIX, Novell NetWare, Apple, Tru64, VMware |

COMPELLENT

7625 Smetana Lane
Eden Prairie, MN 55344

Tel: 877-715-3300
Fax: 952-294-3333

www.compellent.com

ABOUT COMPELLENT

Compellent delivers affordable, modular storage solutions exclusively through business partners that provide companies of all sizes enterprise storage capabilities without big system costs or complexities. Designed by network storage and virtualization pioneers, Compellent enables any business to cut storage expenditures in half, recover from data hazards within minutes, scale to any capacity across any technology and easily manage its storage without adding staff.